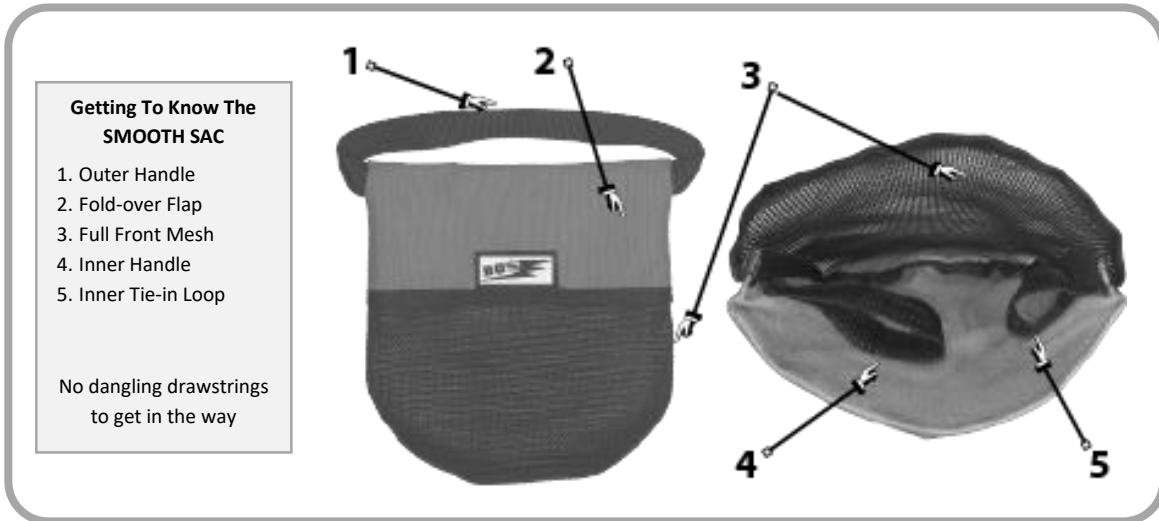




SMOOTH SAC

canyoneering stuff sack for small diameter release cords

- 1000D Nylon and Rugged Vinyl Mesh Exterior for durability and rapid drainage
- Fold-over-flap allows quick opening and closing with no dangling drawstrings
- Flat shape stores easily and prevents rolling



___	• Small	Capacity 1/8" Dyneema 140ft comfortably full or 190ft overstuffed	Dimensions 9.05in x 8.47in (230mm x 215mm)	Weight 2.9oz (84g)
___	• Medium	Capacity 1/8" Dyneema 200ft comfortably full or 280ft overstuffed	Dimensions 9.85in x 9.85in (250mm x 250mm)	Weight 3.6oz (102g)
___	• Large	Capacity 1/8" Dyneema 320ft comfortably full or 500ft overstuffed	Dimensions 12.13in x 9.85in (308mm x 250mm)	Weight 4.2oz (119g)

Visit www.BG-Gear.com for contact information, downloadable versions of these instructions and other material.

© 2017 BG-Gear Last Updated – 12-09-17

WARNING - The distributor-wholesaler-retailer-reseller is responsible for providing this warning information to the customer. Instructions accompanying BG Gear products are not a substitute for qualified personal instruction. Any person using this product is responsible for obtaining qualified instruction on the proper use, techniques and limitations associated with the product. BG Gear is not responsible for any direct, indirect or accidental consequences, damages, injury, or death resulting from use or misuse of this product. Any litigation involving this product will be in Nevada State pursuant to Nevada law.

Guarantee

This product guaranteed free of all material and manufacturing defects for 2 years. Exclusions: normal wear and tear, modifications, incorrect storage or usage or negligence.

Care - Cleaning - Storage

Clean the product with fresh water only and dry thoroughly before storing. Store the product in a dry place away from exposure to UV, chemicals and extreme temperatures.

OVERVIEW OF THE SMOOTH SAC

- Flat shape stores easily and prevents rolling.
- Fold-over closure / no dangling drawstrings.
- Rugged mesh for rapid drainage.
- Small inner tie-in loop set high to easily verify the release cord is tied in.
- Large inner handle for hanging, tossing and tying off top end of release cord.
- Optionally a Smooth Operator can be left tied to release cord and stored inside.



Fig. 1

When closed, the Smooth Sac is flat with the fold-over flap laying smoothly across the front and a single outer handle along the top.

When open, the Smooth Sac is more rounded with the fold-over flap laying smoothly across the back exposing the inner tie-in loop and large inner handle.

OPENING THE SMOOTH SAC



Fig. 8

Place thumbs under each side of the flap.

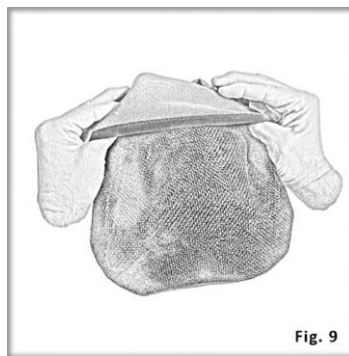


Fig. 9

Press top sides inward with fingers.

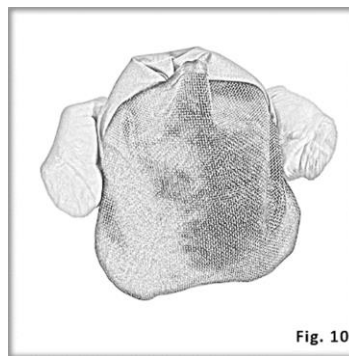


Fig. 10

Use thumbs to fold flap from the front over to the back.

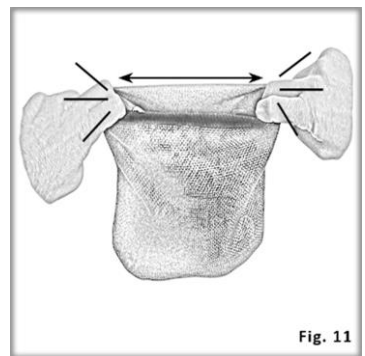


Fig. 11

Place fingers inside and briskly pull outward to snap the Smooth Sac neatly open.

Opening and closing the Smooth Sac is easier when loaded with release cord.

CLOSING THE SMOOTH SAC



Fig. 2

Place thumbs under each side of the flap (Fig. 2).



Fig. 3

Press top sides inward with fingers (Fig. 3).

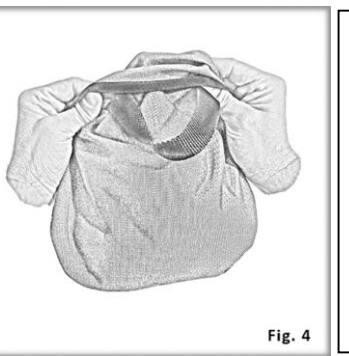


Fig. 4

Use thumbs to fold flap from the back over to the front (Fig. 4).

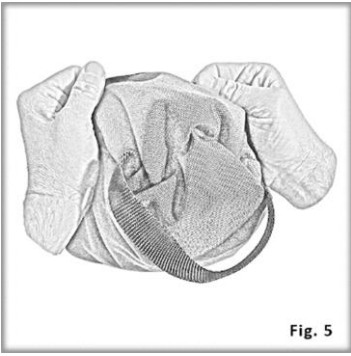


Fig. 5

When the flap is folded over, the Smooth Sac will be wrinkled and bunched up (Fig. 5).

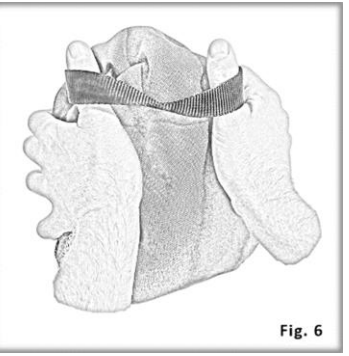


Fig. 6

To make the sac and flap lay smoothly, place thumbs under each side of the outer handle (Fig. 6)

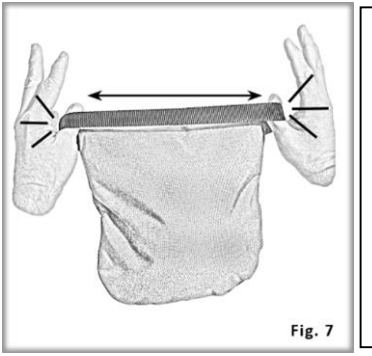


Fig. 7

Briskly pull thumbs outward to snap the Smooth Sac into shape (Fig. 7).

There is no need to try and fold the flap neatly over the Smooth Sac (Fig. 5). The outward yank on the outer handle will straighten the sac and flatten the flap for you (Fig. 7).

HALF OPEN FOR TOSSING

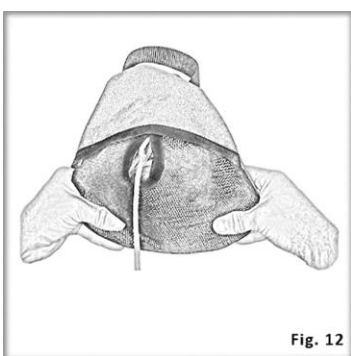


Fig. 12

To place the Smooth Sac in the half open position, start from the closed position. Reach under the flap and pull out the center of the mesh to expose a small opening (Fig. 12).

Placing the Smooth Sac in a half open configuration can be helpful when tossing, to allow release cord to pay out as the Smooth Sac falls. With the end of the release cord secured at the top of the drop and the Smooth Sac tossed down, release cord will flow out the half open top. When the Smooth Sac lands at the bottom of the drop, the half open top will prevent spillage of released cord still inside the Smooth Sac. This is similar to pulling a drawstring style bag to the half open position. The overall flat shape will also help prevent the Smooth Sac from rolling after landing.